



**Lighter  
Stronger  
Better!**

A: 29 Snook St Clontarf QLD 4019  
A: PO Box 122 Margate QLD 4019  
P: 07 3897 5700  
F: 07 3811 6480  
E: info@ecb.com.au  
W: ecb.com.au  
W: customalloy.com.au



REPLACES: 03.02.15  
REVISED: 04.03.21

**BF105SY**

## **FITTING INSTRUCTIONS**

### **FIAT DUCATO 10/14 on BIG TUBE™ BAR VEHICLE FRONTAL PROTECTION SYSTEM (VFPS) FOR AIR BAG & ADR COMPLIANT VEHICLES**

*Ensure these instructions are left with the vehicle owner and/or operator.*

Check installation hardware before commencing.

Special Requirements: T25 and T30 Torx bits and appropriate driver

1. Lift bonnet. Bonnet latch on passengers side at end of dash in door opening.
2. Remove two T30 Torx head bolts from top of headlights. Disconnect headlight wiring. Slide to inside of vehicle to remove.
3. Remove eight T30 Torx bolts from top of grille and two T30 plastic screw clips from bottom of grille. Gently lift grille to remove taking care to lift vertically from plastic retaining clips. CAUTION: forward sliding of grille, will break clips.
4. Behind grille remove twelve T30 Torx bolts, and four T30 Torx bolts under front of bumper. Remove centre plastic section of bumper. Remove front underside bolts from bumper side sections.
5. Drop front of under bodyguard by removing two T25 Torx screws from lower inner guard and nine PK screws across underside of bumper. Allow to hang. **See figure 1.**
6. Remove bumper support. Two 13mm head bolts from underside front of plastic bumper sections, three 15mm head bolts (per side) on front of chassis rail and one 15mm head nut at top outer corner of front of chassis rail. Retain 13mm head bolts and 15mm head nut for re-fitment. Twist bumper support forward and down to remove. **See figure 2.**
7. Mask edges of outer bumper sections. Mark bumper according to Figure 3 below (50mm top measurement and 45mm lower measurement). Double check measurements and trim inside edge of outer bumper sections using a jigsaw or similar, to allow access for ECB steel mounting brackets. **See figure 3 and 4.**
8. Fit ECB steel mounting brackets (supplied) to vehicle with lower tab to underside of original equipment lower bumper support and tow hooks to inside of vehicle. Attach using original 15mm head nut, three M10 x 35 x 1.25mm bolts, spring washers and flat washers (per side)(supplied) and original 13mm head bolt for lower support mount.
9. Align steel mounting brackets using outside measurement of alloy mounts on ECB protection bar to inner measurement of ECB steel mounting brackets as a guide. Centralise steel mounting brackets to vehicle and **TIGHTEN ALL BOLTS.**
10. Using a Jigsaw or similar and a sharp knife, remove lower section of plastic bumper centre across top of lower grille retaining lower mounting holes. Retain centre grille bolt area for re-fitment. **See figure 5.**
11. Refit plastic bumper centre to vehicle using original T30 Torx screws.



**Lighter  
Stronger  
Better!**

**A:** 29 Snook St Clontarf QLD 4019  
**A:** PO Box 122 Margate QLD 4019  
**P:** 07 3897 5700  
**F:** 07 3811 6480  
**E:** info@ecb.com.au  
**W:** ecb.com.au  
**W:** customalloy.com.au



12. Attach 6mm clip lock trim (supplied) to top of ECB protection bar. **NOTE:** Trim off lower edge on an angle so trim will sit flush with end of protection bar. **See figures 6, 7 and 8.**
13. Fit protection bar to steel mounting brackets using eight M12 x 40 bolts, flat washers, spring washers and nuts (supplied). **FINGER TIGHTEN ONLY.**
14. Align protection bar with vehicle allowing 10mm between bumper sides at front and protection bar. **See figures 9, 10 and 11. TIGHTEN ALL BOLTS.**
15. Refit grille to vehicle using original T30 Torx bolts.
16. Refit under bodyguard to vehicle using original PK screws. **Do not over tighten as this will strip retaining lugs in support.**

**NOTE:** Towing points are provided on steel mounts. These are designed to be paired and used together for straight line towing. **See figure 12.** Failure to use both tow hooks when towing may result in damage to both vehicle and ECB Protection Bar. Always take care when towing and observe safety requirements of equipment being used.

#### **ENSURE NUMBER PLATE IS CLEARLY VISABLE**

**Note:** When fitting/refitting the licence plate to the vehicle, ensure there is no obstruction to licence plate vision in accordance with local authorities. If required relocate licence plate to an alternate location.

#### **Further VFPS Notes:**

- a) Do not attach VFPS to the vehicle using anchorages not intended for this purpose (e.g. engine mounting bolts).
- b) Do not use this product for any vehicle make or model, other than those specified by the VFPS manufacturer.
- c) Do not remove the plaque or label from the VFPS.
- d) Do not modify the structure of the VFPS in any way.
- e) No accessory or fitment should project forward of the VFPS forward profile.
- f) **ENSURE THESE INSTRUCTIONS ARE LEFT WITH VEHICLE OWNER AND/OR OPERATOR.**

#### **IMPORTANT INFORMATION**

Periodically check bolts and nuts for correct tightness, especially if travelling on rough roads

#### **FITTING KIT**

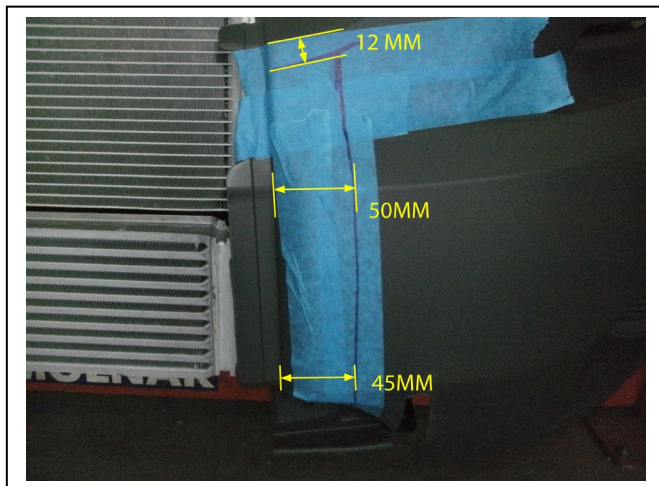
1 – Pair Steel mounting brackets	16 – M12 flat washers
6 – M10 x 1.25 x 35mm bolts	8 – M12 spring washers
6 – M10 flat washers	8 – M12 x 1.75 nuts
6 – M10 spring washers	1 – 2400mm length 6mm clip lock trim
8 – M12 x 1.75 x 40 bolts	



**Figure 1** - Under body guard dropped away from vehicle



**Figure 2** – Bumper support, drivers side shown



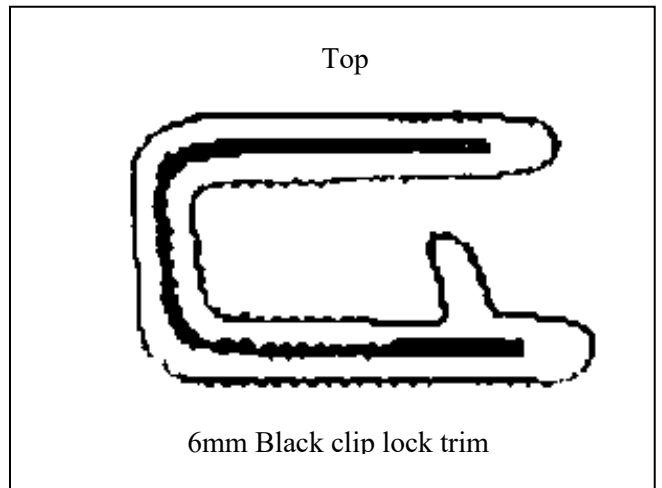
**Figure 3** – Trim section from front of side bumper sections. Retain lower bolt in area under cut.



**Figure 4** – Completed trim section from front of side bumper sections..

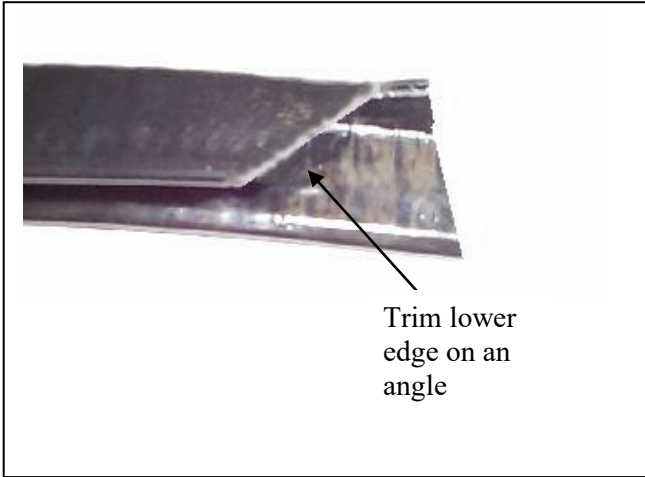


**Figure 4** – Cut line across centre plastic grille

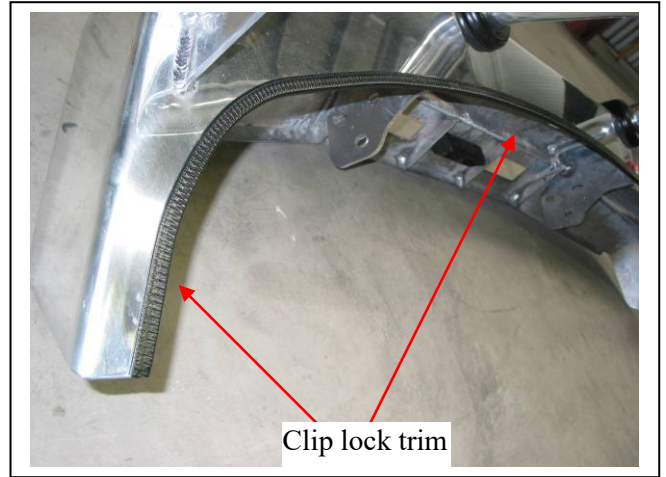


**Figure 5**





**Figure 6**



**Figure 7**



**Figure 9 – Front View**



**Figure 10 – Side view**



**Figure 11 - Old model shown**



**Lighter  
Stronger  
Better!**

A: 29 Snook St Clontarf QLD 4019  
 A: PO Box 122 Margate QLD 4019  
 P: 07 3897 5700  
 F: 07 3811 6480  
 E: info@ecb.com.au  
 W: ecb.com.au  
 W: customalloy.com.au



**We value your comments**

Dear Fitter,

ECB would like to know how you went with the installation of this product. We value your comment and may need to contact you to clarify some details so please complete your contact details clearly.

We would appreciate if you could complete as many of the following details as possible.

<b>Your Name:</b>	<b>Your contact No.</b>
<b>Product Part No.</b>	<b>Product Invoice No.</b>
<b>Product Description:</b>	<b>Make, model, and year of vehicle:</b>
<b>Product Work Order No.</b>	<b>Company your from/Company product purchased from:</b>

**Date of Fitment:** \_\_\_/\_\_\_/\_\_\_

Was the fitting hardware supplied complete?      Yes      No  
     

If no what was not supplied

---



---

Did the installation go well?      Yes      No  
     

Please provide comments

---



---



---

Please draw diagrams if you need to.

**Post to**  
 Reply Paid 122  
 PO Box 122  
 Margate QLD 4019

**Email to**  
 info@ecb.com.au



**Lighter  
Stronger  
Better!**

A: 29 Snook St Clontarf QLD 4019  
A: PO Box 122 Margate QLD 4019  
P: 07 3897 5700  
F: 07 3811 6480  
E: [info@ecb.com.au](mailto:info@ecb.com.au)  
W: [ecb.com.au](http://ecb.com.au)  
W: [customalloy.com.au](http://customalloy.com.au)





**Lighter  
Stronger  
Better!**

A: 29 Snook St Clontarf QLD 4019  
A: PO Box 122 Margate QLD 4019  
P: 07 3897 5700  
F: 07 3811 6480  
E: info@ecb.com.au  
W: ecb.com.au  
W: customalloy.com.au



## *Thank you for purchasing an ECB Product*

Please ensure that you read the below and complete the warranty registration.

### **Vehicle Owner / Operator Responsibilities and Product Care**

#### **Important Information**

It is the responsibility of the vehicle owner and operator to ensure all nuts and bolts are checked periodically, especially when travelling on corrugated roads. Please ensure these are tightened as per the steps in the provided fitting instructions.

While ECB products are manufactured from high tensile alloy the vehicle owner / operator must check any steel mounting brackets or steel auxiliary parts for signs of corrosion. If you find any corrosion, please contact ECB Pty Ltd to discuss an appropriate solution – 1800 069 145 or [www.ecb.com.au](http://www.ecb.com.au).

### **Product Care**

#### **Polished Products**

Being a premium mirror polished finish, regular maintenance will be required to keep that iconic ECB shine. We recommend using our own brand of Aluminium Polish. This formula has been tried and tested and in our opinion is the world's best standard.

Directions: Apply a small quantity of Aluminium Polish to a clean soft cloth and rub the metal surface. The longer the rubbing the brighter the surface becomes. Wipe off Aluminium Polish with clean soft cloth. Also suitable for motorised buffing machines. Note: There are more specific details on the polish bottle. Please read before use.

#### **Powder Coated Products**

Our powder coated finishes are very low maintenance. In fact, there is actually very little you will ever need to do for this product. Just clean it as you would your car and it will stay looking good as new.

#### **ECB Aluminium Polish**

When you're looking for that showroom finish look for your polished automotive products, you can depend on the no compromise quality of East Coast Bullbars Aluminium Polish. This specifically designed product is the best polish available and we guarantee that this \$#!+ works. Within our decades of manufacturing polished alloy products, we have trialled a large range of different polishes on the market and believe without a doubt that nothing beats the finish quality of East Coast Bullbars Aluminium Polish.

East Coast Bullbars Aluminium Polish is excellent for use by hand and is ideal for polished bullbars, nudge bar and stainless-steel products. This polish will clean, polish and protect your product from the elements whilst bringing your products back to that showroom finish look.





**Lighter  
Stronger  
Better!**

A: 29 Snook St Clontarf QLD 4019  
 A: PO Box 122 Margate QLD 4019  
 P: 07 3897 5700  
 F: 07 3811 6480  
 E: info@ecb.com.au  
 W: ecb.com.au  
 W: customalloy.com.au



## Warranty Registration

Please Register your purchase online [www.ecb.com.au/warranty-registration](http://www.ecb.com.au/warranty-registration)  
 If you have any questions, please contact our national office on 1800 069 145 or [www.ecb.com.au](http://www.ecb.com.au)

Or post the below information back to ECB, PO Box 122, Margate, QLD 4019.

### Contact Details

Name:	
Address:	
Email:	
Phone:	

### Purchase Details

Purchased from:	
Date of Purchase:	

### Product Details

(You can find this information on the silver label of your ECB Product)

Part Number:	BFI05SY
Work Order Number:	

By submitting this registration, you automatically subscribe to ECB's mail outs. You can unsubscribe at any time.



## DESPATCH CHECKLIST BFI05SY

Work Order #		<b>See other side of this page for photos of all mounts</b>
Finish:		
Transport:		
Due Date:		

- 1 – Pair Steel mounting brackets.
- 1 – Bolt Kit.
- 1 – 2400mm length 6mm clip lock
- 2 – ECB overrides – **Fitted to Bar**
- 6 – 6mm air vents – **Fitted to Bar**
- 2 – Round cut out surrounds – **Fitted to Bar with narrow edge to flat side of cut out**
- Check vent slots and remove dags and polishing lint



Is this product “the best it can be” Yes \_\_\_\_\_ / \_\_\_\_\_  
Wrapper's initials / Checker initials  
 If **NO** fix before continuing

All parts checked and completed by:

Nut and bolts: \_\_\_\_\_ Date \_\_ / \_\_ / \_\_

Order control: \_\_\_\_\_ Date \_\_ / \_\_ / \_\_

Final wrap check: \_\_\_\_\_ Date \_\_ / \_\_ / \_\_



**Lighter  
Stronger  
Better!**

A: 29 Snook St Clontarf QLD 4019  
A: PO Box 122 Margate QLD 4019  
P: 07 3897 5700  
F: 07 3811 6480  
E: info@ecb.com.au  
W: ecb.com.au  
W: customalloy.com.au

